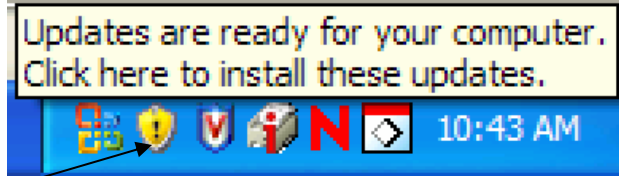


Manually Installing Windows Update Involving Internet Explorer 7

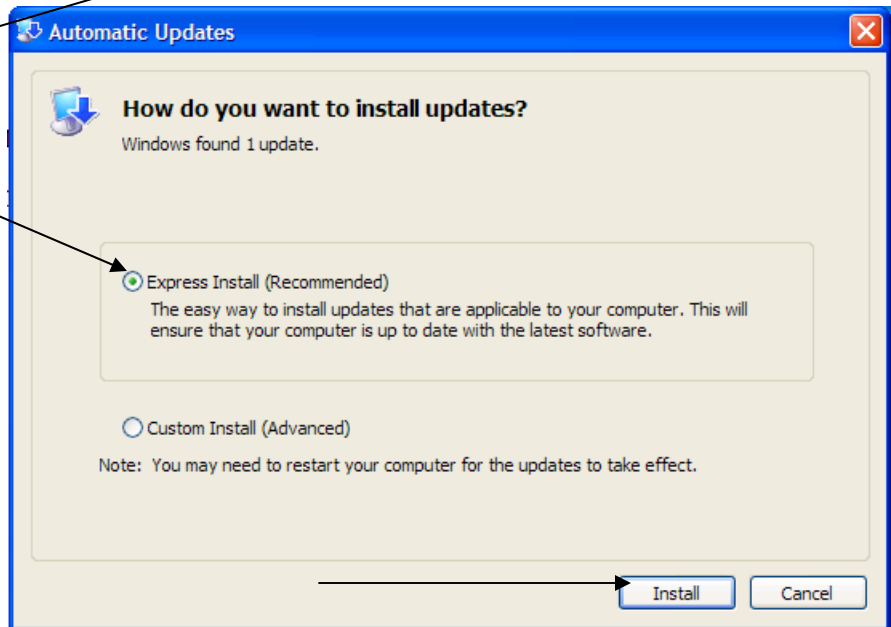
When your pc indicates that you have a Windows Update available, you'll have a gold shield in your system tray (down by the time). When you "hover" your mouse over this gold shield, you'll get something like this:

(note: this is an enlarged version of what you'll actually see)



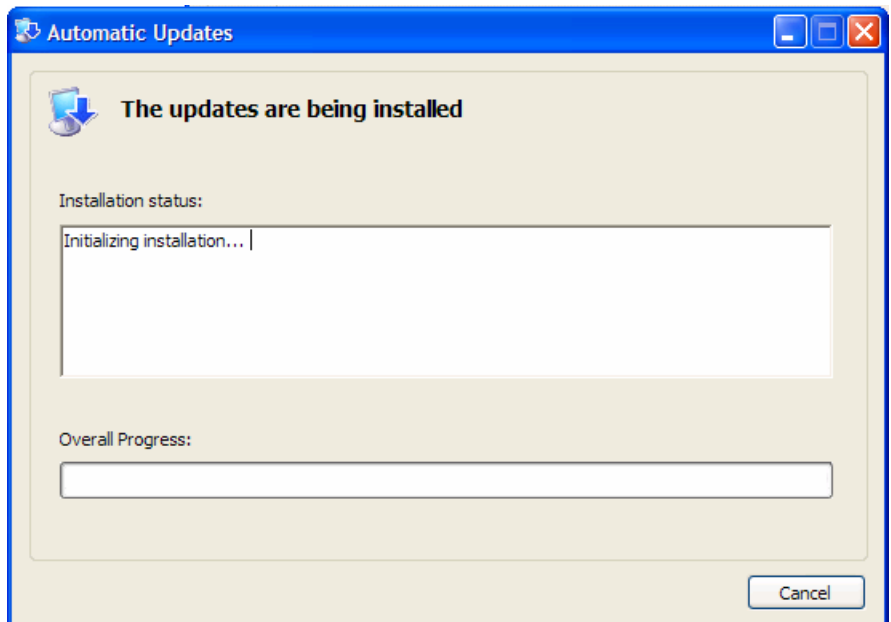
So, click on the gold shield to start the installation process, and you'll get this:

Make sure "Express Install" is indicated, then click on the "Install" button

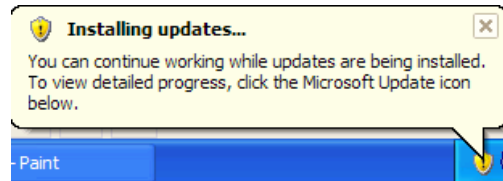


You'll get this:

Just let it cook



After a few seconds, the above screen will automatically minimize. If you want to know how the update is going, you can click on the gold shield to bring it back up.



You may get a few pop-up windows describing what your pc is doing, just leave them alone.

Once your pc is ready to start the actual installation, you'll have this screen:

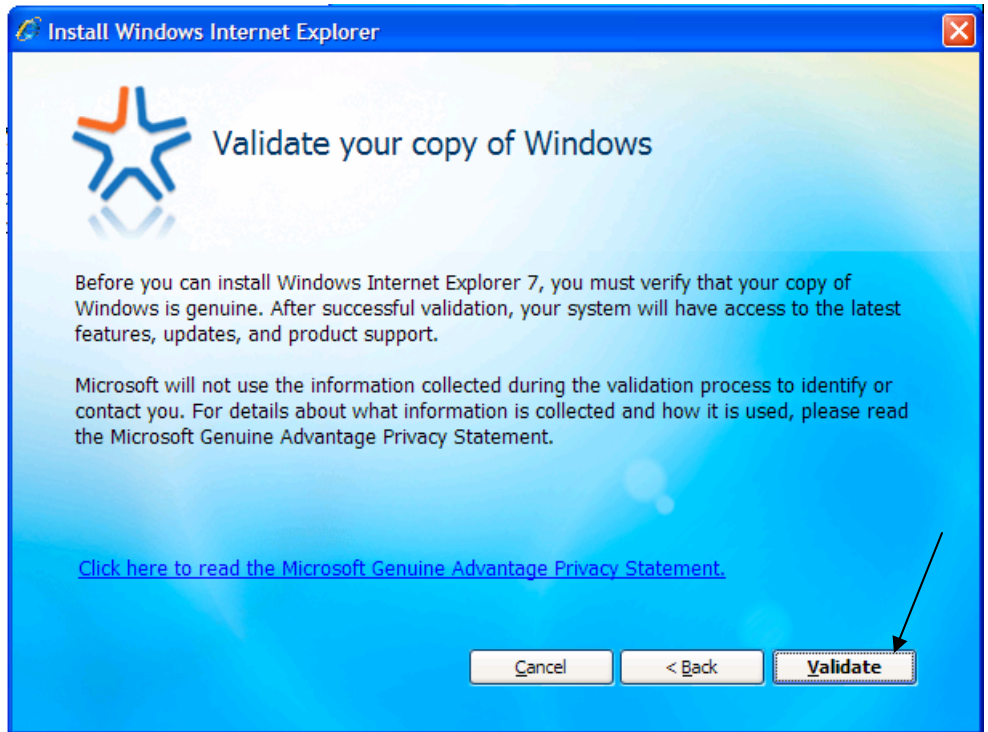
Click on the "Install" button



You'll get this, read through the license agreement and then click the "I Accept" button



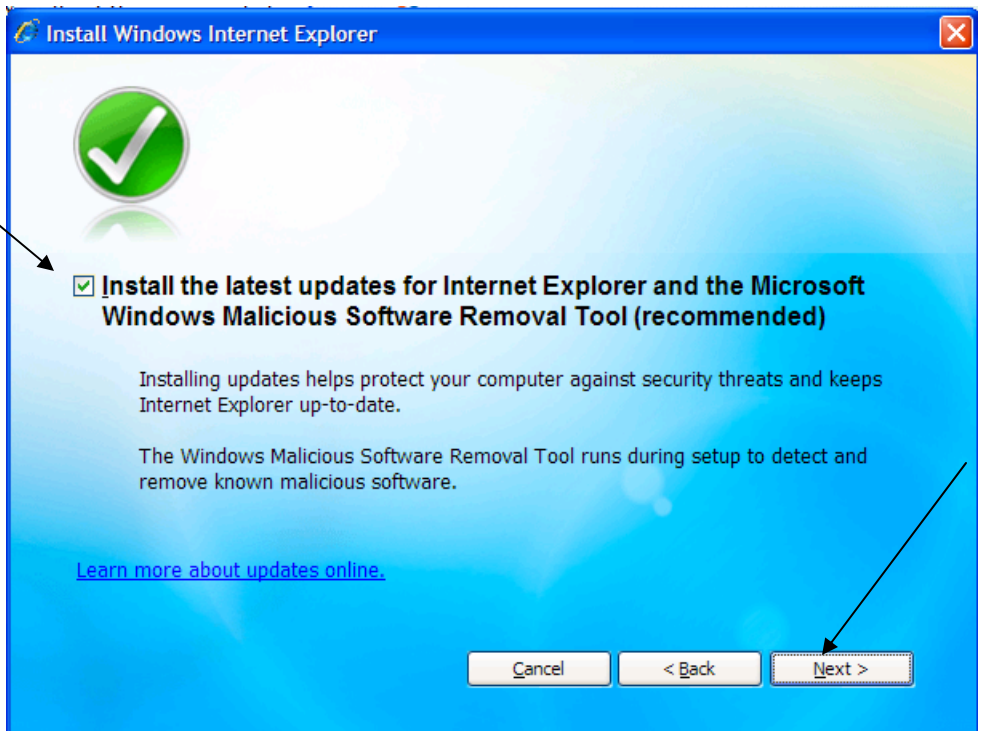
You'll get this screen, click on the "Validate" button



Your pc will then check that you are running a valid copy of Windows.

You'll get this:

Leave the option for installing the Malicious Software Removal Tool clicked ON, then click "Next"



You'll get this as your pc downloads ...

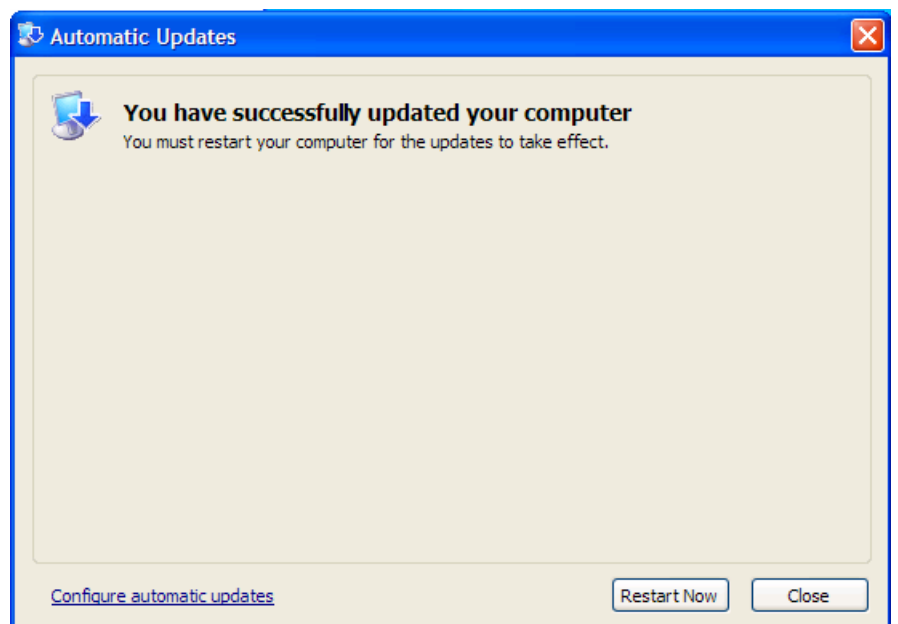


and then installs the IE7 updates.



Once the update is completed, you'll have this screen.

Close any open applications and then click "Restart Now" to restart your pc.



Once your pc has restarted, log back into your Novell account and then launch IE7.

The 1st time you launch IE 7 (regardless of whether or not you actually ran the Windows update), you'll get this screen. (Every user of a given pc has to make these settings choices, since these settings are user specific and not pc specific.)



Required Settings:

Indicate your choice regarding a search provider

Thank you for choosing Internet Explorer 7

To complete the installation and setup, please select the appropriate options and click the Save settings button.

Required Settings
Search Provider

Required Settings



Please choose your default search provider

Internet Explorer 7 allows you to easily find information on the web using a search provider.

Your current default search provider is: *Live Search*

- Keep my current default search provider.
- Let me select from a list of other search providers.

Optional Settings

Optional Settings:

Turn ON the Automatic Phishing Filter



Help make your browsing more secure by setting up Phishing Filter

Phishing Filter is designed to warn you if the website you are visiting might be impersonating another website.

- Turn on automatic Phishing Filter (recommended).

Some website addresses will be sent to Microsoft to be checked. Information received will not be used to personally identify you. Read [Internet Explorer's Privacy Statement](#) online.

Leave this setting alone



See webpages more clearly

Turning on Microsoft ClearType can help make webpage text easier to read. After turning on ClearType, use the [ClearType Tuner](#) to adjust the settings for your monitor.

- Always use ClearType to view web pages (recommended).

Choose what's best for you here



Help customize webpages to your current location

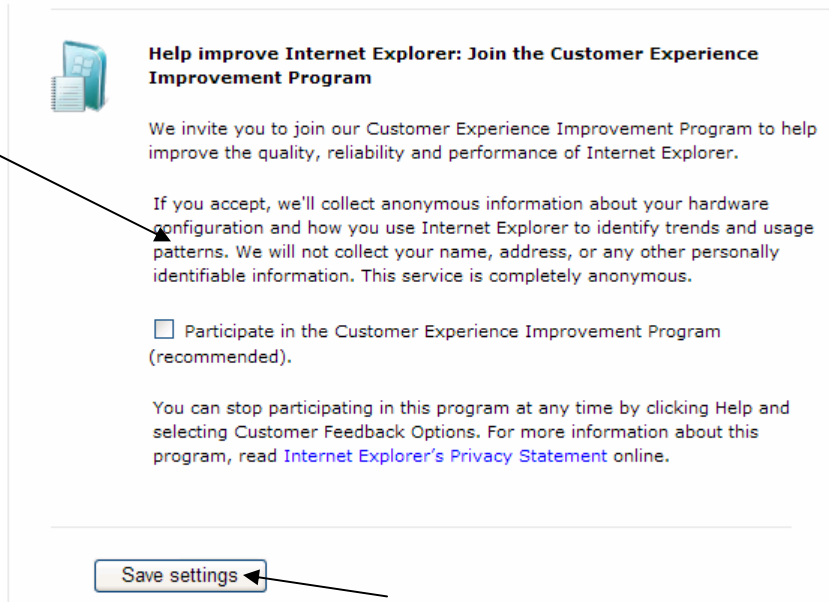
Selecting your current location and language below helps websites show you content specific to your location.

Choose your region and language:

- Use the current settings: English (United States)
- Use the following settings:

English (United States) [dropdown arrow]

Your choice on this one (I “declined”.)



Help improve Internet Explorer: Join the Customer Experience Improvement Program

We invite you to join our Customer Experience Improvement Program to help improve the quality, reliability and performance of Internet Explorer.

If you accept, we'll collect anonymous information about your hardware configuration and how you use Internet Explorer to identify trends and usage patterns. We will not collect your name, address, or any other personally identifiable information. This service is completely anonymous.

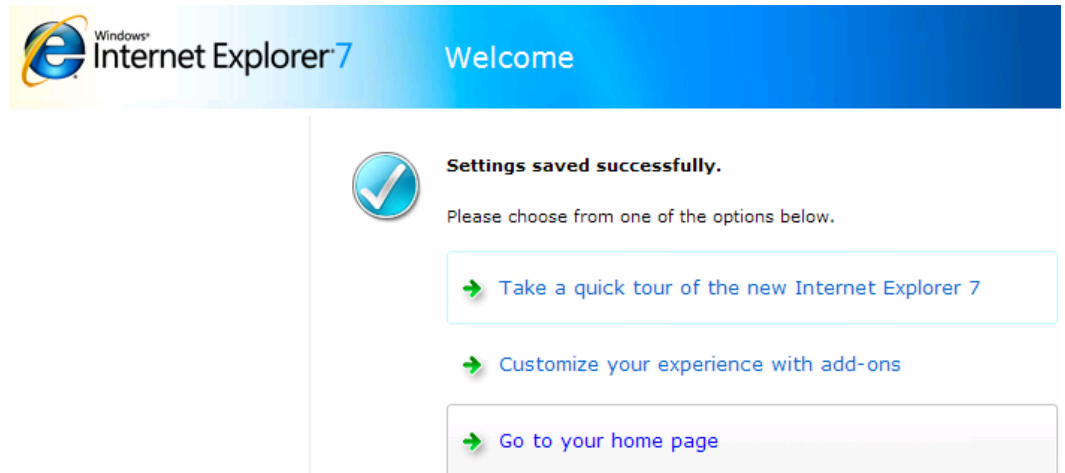
Participate in the Customer Experience Improvement Program (recommended).

You can stop participating in this program at any time by clicking Help and selecting Customer Feedback Options. For more information about this program, read [Internet Explorer's Privacy Statement](#) online.

Save settings

Once you have your choices selected, click on the “Save Settings” button.

You'll get this screen.



Windows Internet Explorer 7 Welcome

Settings saved successfully.

Please choose from one of the options below.

- Take a quick tour of the new Internet Explorer 7
- Customize your experience with add-ons
- Go to your home page

Take the tour, customize with add-ons or just go on through to your home page by clicking on the appropriate hot link

IE7 will then launch. Your default home page and favorites should be as they were in IE6.